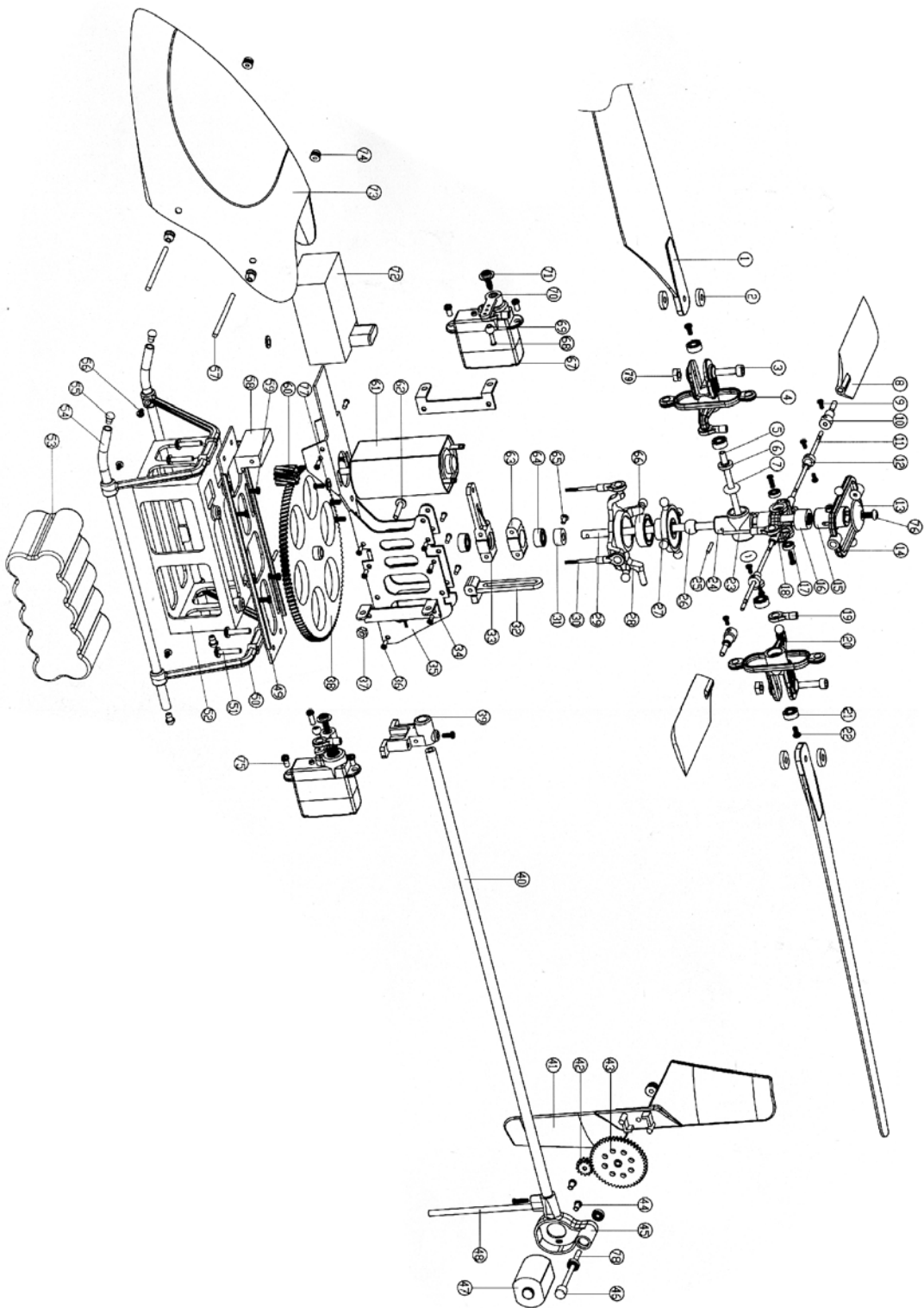


# HM 52#1



Part Code	Description	Specification	Qty
001	Rotor Blade		2
002	Main Blade Holder Washer		4
003	Cross Recessed Pan Head Screw	PM2-4.8	2
004	Rod Ring		2
005	Main Blade Shaft		1
006	Main Rotor Blade Ring		2
007	O-shape Seal Ring		2
008	Flybar Paddle		2
009	Cross Recessed Pan Head Screw	PM1.2-2	6
010	Flybar Connector		2
011	Flybar Rod		1
012	Locking Sleeve 2		2
013	Rotor Brake		1
014	Outer Transmission Ring		1
015	Steering Sleeve		1
016	Rotor Head Sleeve		2
017	Bearing	$\Phi 1.5 \times \Phi 1.2$	4
018	Inner Transmission Ring		1
019	3MM Ball Link Connector		8
020	Blade Holder		2
021	Bearing	$\Phi 2 \times \Phi 5.2$	4
022	Cross Recessed Pan Head Screw	PM1.2-3	2
023	Linkage 1		2
024	T-Shape Holder		1
025	Rotor Head Pin		2
026	Swashplate Guide Ball		1
027	Swashplate Cover		1
028	Swashplate Base		1
029	Main Shaft		1
030	Linkage 1		2
031	Main Shaft Locking Sleeve		1
032	Guide Frame		1
033	Main Shaft Fixer B		1
034	Servo Pedestal A		2
035	Main Frame		1
036	Cross Recessed Pan Head Tapping Screw	PB1.4-3	18
037	Type-1 Hexagonal Nut	M1.6	1
038	Main Gear		1
039	Tail Boom Holder		1
040	Tail Boom		1
041	Tail Rotor Blade		1
042	Tail Motor Gear		1

Part Code	Description	Specification	Qty
043	Tail Gear		1
044	Cross Recessed Pan Head Screw	PM1.4-3	2
045	Tail Motor Holder		1
046	Tail Rubber Ring		1
047	Tail Motor Set		1
048	Tail Knighthead		1
049	Main Frame (Bottom)		1
050	Knighthead		2
051	Cross Recessed Pan Head Tapping Screw	PB1.7-6	4
052	Battery Box		1
053	Battery		1
054	Skid Rod		2
055	Skid Rod Cap		4
056	Cross Recessed Pan Head Tapping Screw	PA1.4-3	4
057	Canopy Rod 2		1
058	Holding Block		1
059	Cross Recessed Pan Head Screw	PM2-3	7
060	130 Motor Gear		1
061	130 Motor		1
062	Cross Recessed Pan Head Screw	PM1.6-12	1
063	Main Shaft Fixer A		1
064	Bearing	$\Phi 2.5 \times \Phi 6.2.5$	2
065	Cross Recessed Pan Head Screw	PM1.6-2	1
066	Bearing	$\Phi 7 \times \Phi 11.3$	2
067	4.3g Servo		1
068	Cross Recessed Pan Head Tapping Screw	PB1.2-4	3
069	Aluminum Ball		2
070	Servo Ball Crank		2
071	Tapping Screw With Washer	PW.B1.7-3	2
072	Receiver		1
073	Canopy		1
074	Canopy Rod Cap		9
075	Cross Recessed Counter Sink Head Tapping Screw	KB3-3	6
076	Cross Recessed Pan Head Tapping Screw	PB1.7-5	1
077	Washer	$\Phi 2 \times \Phi 5.2$	2
078	Tail Blade Shaft		1
079	Type-1 Hexagonal Nut		2